

將軍澳跨灣連接路 Cross Bay Link, Tseung Kwan O

第九期 Issue 9
十月 OCT 2020

工程進展 Works Progress

將軍澳跨灣連接路工程項目(跨灣連接路)由2018年7月動工至今已踏入第3年，現時建造工程正在全面進行。即使面對不少挑戰，工程團隊仍致力於2022年完成跨灣連接路，盡早為進出將軍澳東南部提供另一條通道，以紓緩將軍澳市中心及環保大道一帶交通擠塞的問題。

設計建造創傳奇

跨灣連接路的海上高架橋由400米鋼拱橋樑和600米混凝土橋樑組成，本著「建造業2.0」使用創新思維的理念，海上高架橋採用多種類別的預製組件，包括鋼拱橋樑組件、混凝土箱形橋樑、V型橋墩及樁帽殼。現時，橋樑預製組件仍然在預製件廠房生產。

混凝土橋樑由18件預製箱形橋樑組成，最長組件的跨度約75米，重約3,300公噸，相等於約17架波音747珍寶客機空載的重量，為全港最重及最長的全跨度預製混凝土箱形橋樑，該箱形橋樑已於2020年8月安裝在將軍澳灣的V型橋墩之上。為了吊運及安裝箱形橋樑預製組件，本工程使用了起重機臺船「一航津泰」，其安全操作負荷為4,000公噸。



The construction of Cross Bay Link (CBL), Tseung Kwan O has entered its third year since its commencement in July 2018, and is now proceeding in full swing. Despite facing various challenges, the project team makes every endeavour to complete CBL in 2022 to provide an alternative access route to the south-eastern part of Tseung Kwan O, thereby relieving the traffic congestion within the Tseung Kwan O town centre and along Wan Po Road.

Unprecedented Design and Construction

The marine viaduct of CBL comprises 400 metres steel arch bridge and 600 metres concrete bridge. In line with the innovation initiative of “Construction 2.0”, the marine viaduct adopts a diversity of precast components, including those for the steel arch bridge, concrete box girders, V-piers and pile-cap shells. Fabrication of precast components of the marine viaduct at off-site yards is still in progress.

The concrete bridge consists of 18 precast box girders. The longest one is about 75 metres long and of weight about 3,300 tonnes, which is equivalent to the weight of about 17 Boeing 747 Jumbo Jets without passengers. It is the heaviest and longest precast full span concrete box girder in Hong Kong. The box girder was installed on V-piers at Junk Bay in August 2020.

To lift and install the box girders, the crane barge “Yi Hang Jin Tai” with a safe working load of 4,000 tonnes was deployed.

在將軍澳灣安裝全港最重及最長全跨度預製混凝土橋樑組件
The heaviest and longest full span precast concrete box girder segment in Hong Kong was installed at Junk Bay

將軍澳 - 藍田隧道 (興建中)
Tseung Kwan O - Lam Tin Tunnel
(Under Construction)

連接D9路的
單車徑及行人路
Cycle Track and Footpath
Connecting Road D9

將軍澳第86區
Tseung Kwan O
Area 86

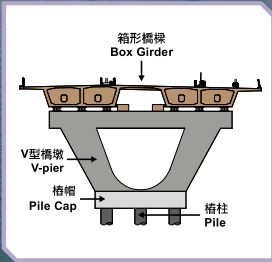
環保大道
Wan Po Road

將軍澳灣
Junk Bay

環澳路
Wan O Road

D9路
Road D9

海上高架橋
Marine Viaduct



- 圖例 Legend:
- NE/2017/07 海上高架橋段 Marine Viaduct
 - NE/2017/08 D9路段 Road D9
 - NE/2017/07 機電維修站 E&M Plant Room

海上工程 Marine Works

地面工程 Land Works



安裝預製箱形橋樑
Erection of precast box girder



於將軍澳灣現場建造V型橋墩
Cast-in-situ V-pier at Junk Bay



興建橋台
Construction of abutment



興建地面路段的底層結構
Construction of substructural works at at-grade road section



安裝V型橋墩
Erection of V-pier



安裝樁帽殼
Installation of pile-cap shell



安裝預製箱形橋樑在D9路橋台上
Installation of precast box girder on the abutment at Road D9



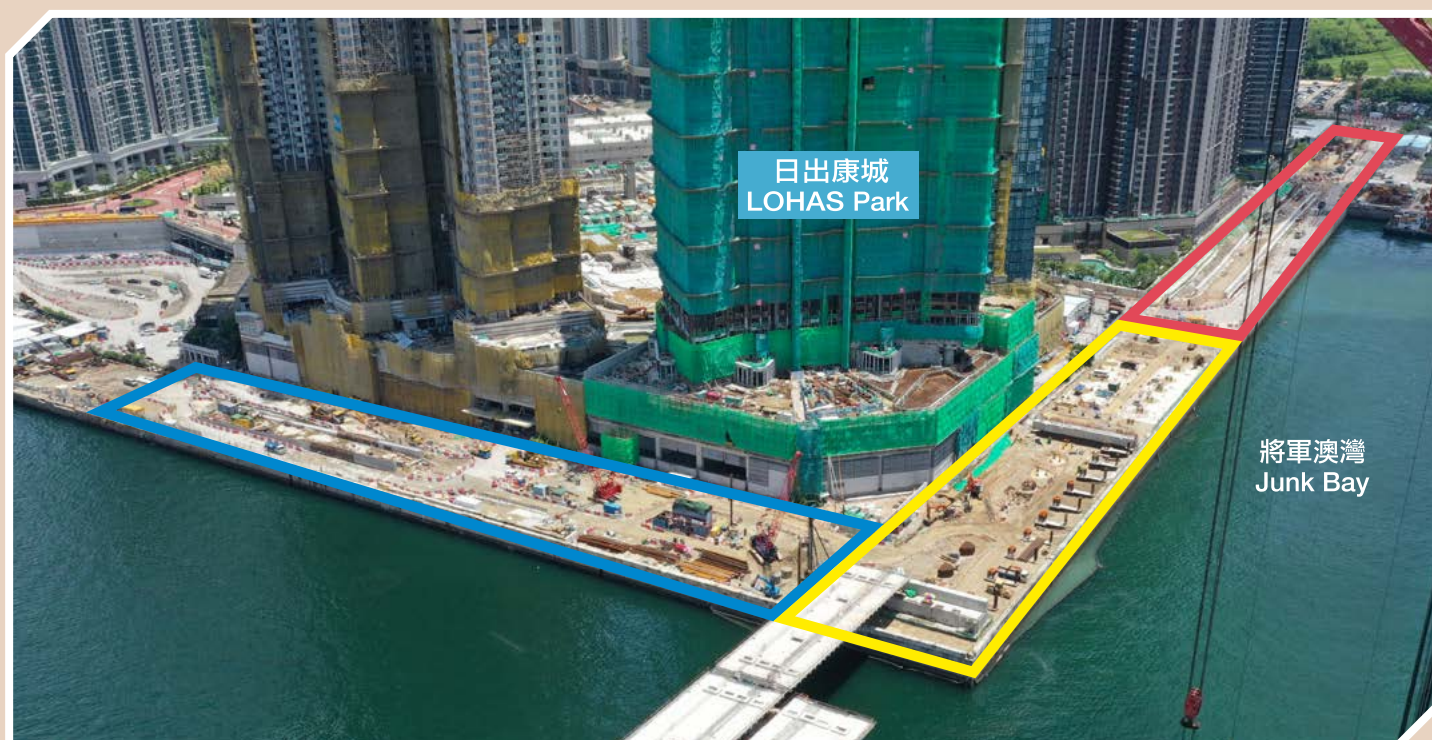
進行地基工程
Construction of foundation works

海上高架橋的地基工程已於2020年1月完成
The foundation works for the marine viaduct were completed in January 2020

D9 路工程進展 Works Progress of Road D9

環澳路正進行地基工程，D9路地面路段正進行底層結構工程，高架路段方面，一件海上高架橋的預製混凝土箱形橋樑已於 2020 年 8 月安裝在 D9 路橋台上，餘下的橋台及高架路段結構工程將繼續進行。

Foundation works are being carried out at Wan O Road. Substructural works of the at-grade road section of Road D9 are in progress. For elevated road section, a precast concrete box girder of the marine viaduct was installed on the abutment at Road D9 in August 2020. The remaining construction works of abutment and the elevated structure would continue.



■ 連接D9路的單車徑及行人路
Cycle track and footpath connecting Road D9

■ D9路 (高架路段)
Road D9 (Elevated Section)

■ D9路 (地面路段)
Road D9 (At-grade Road Section)

資訊與聯絡 Information and Enquiries

如欲知詳情，請瀏覽「將軍澳跨灣連接路」的工程網頁：

For further information, please visit the Cross Bay Link, Tseung Kwan O's project website:

www 工程網頁：
Website

www.cbltko.hk



歡迎提出意見及建議
Your views and comments are welcome

☎ 熱線電話：
Hotline
6799 8302

✉ 電郵地址：
Email

cbl@cedd.gov.hk